

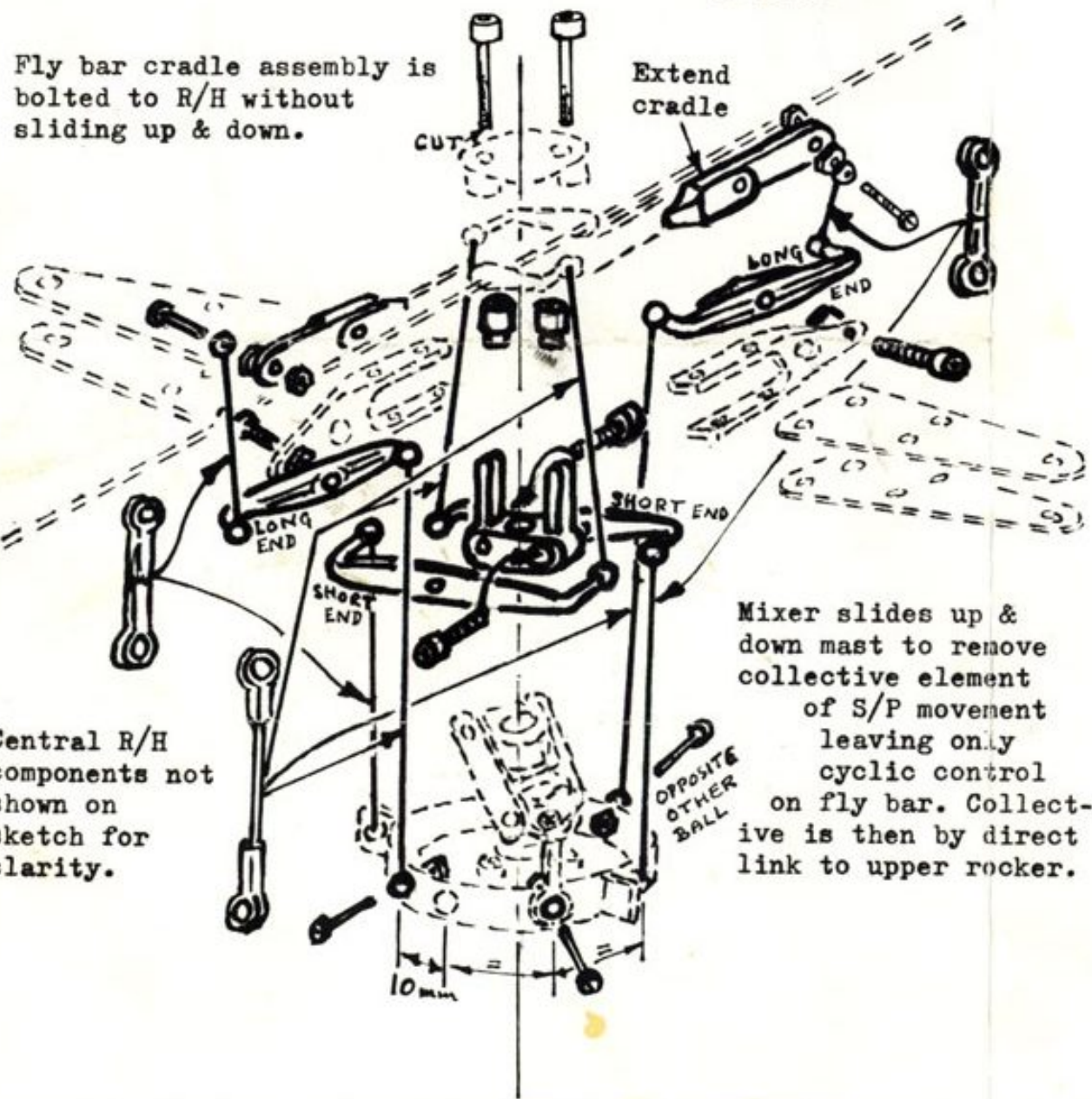
MORLEY HELICOPTERS

ROTOR HEAD MIXER KIT.

Contents

2	Long rocker	2 X 6	Ball eyes
2	Short rocker	3	Ball
1	Mixer slide	3 M2 X 12	Screw
2	Carrier extension	3 M2	Nuts
2	Spacer	2 M3 X 16	Cap screw
1 X 38	All thread	2 M3 X 20	Cap screw
4 X 38	Control rod	2 M3	Nuts

Fly bar cradle assembly is bolted to R/H without sliding up & down.



Central R/H components not shown on sketch for clarity.

Remove R/H from model.

- 1 Drill 3 X 2 mm holes in cup side of S/P top for ball ends position as shown.
- 2 Assemble mixer, the shorter end of the long rockers to the outside, the long end sliding past the recessed screw head holding the other one. Slide onto mast.
- 3 Remove ball end from R/H incidence finger and drill out to 3 mm. Insert the M3 X 16 screw inwards and lock with nut. The short, or upper, rocker pivots on the thread of this screw.
- 4 Re-fit R/H to mast top.
- 5 Remove ball end from end of fly bar carrier and replace with extension moulding, refit ball end onto extension.
- 6 Bolt fly bar/cradle/slider assembly rigidly to mast top plate moulding with spaces under using M3 screw.
- 7 Use a short piece of the all thread rod to join ball eyes back to back. 4 off where shown.
- 8 Use 38 mm rods to make links to complete assembly. 4 off where shown.
- 9 S/P driver is reset on mast at a height where forks on mixer assembly will not quite drop out of mast top moulding. Note that collective is reduced by introduction of mixer so S/P vertical movement may need to be increased.