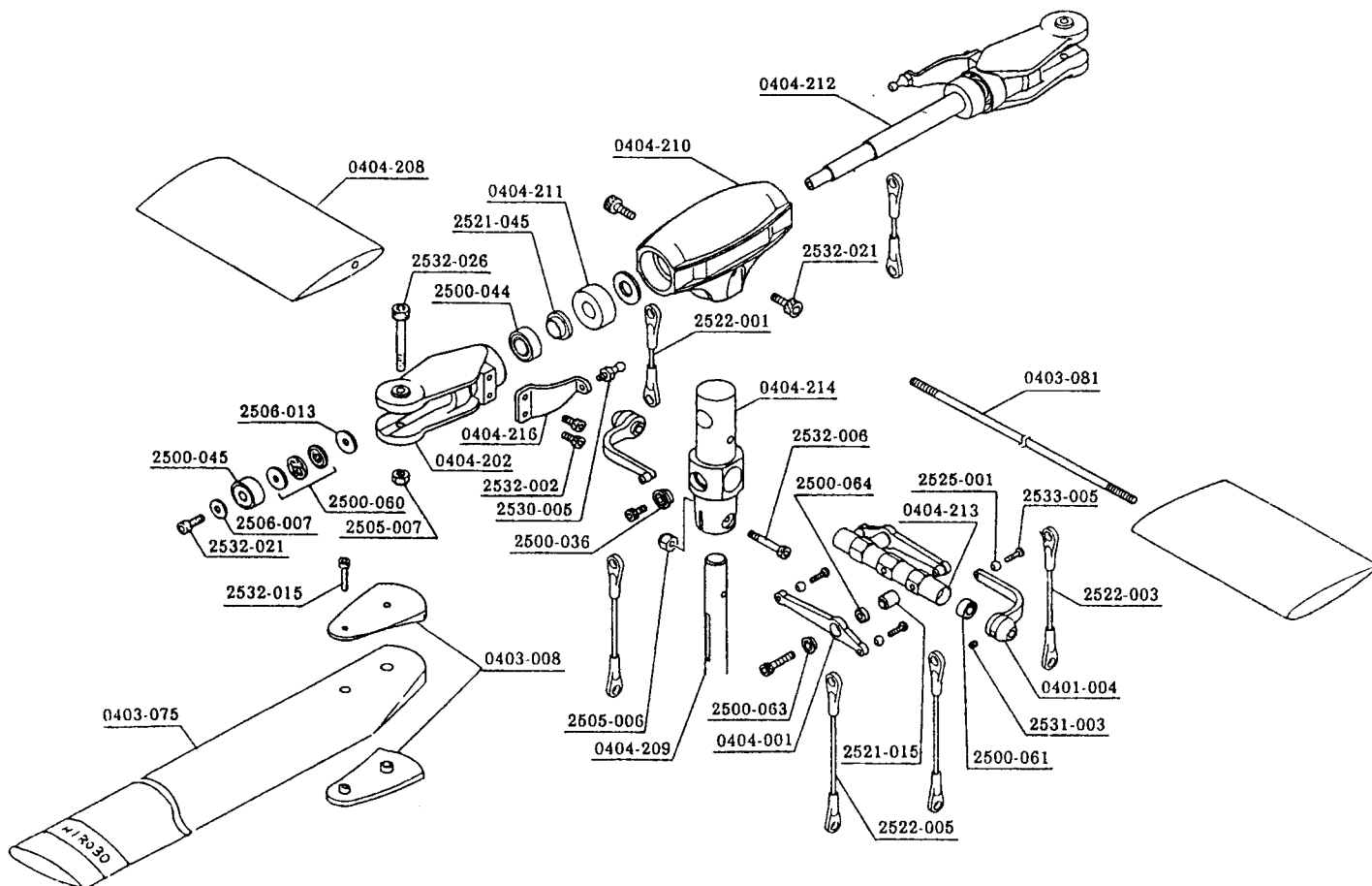


Rotor head

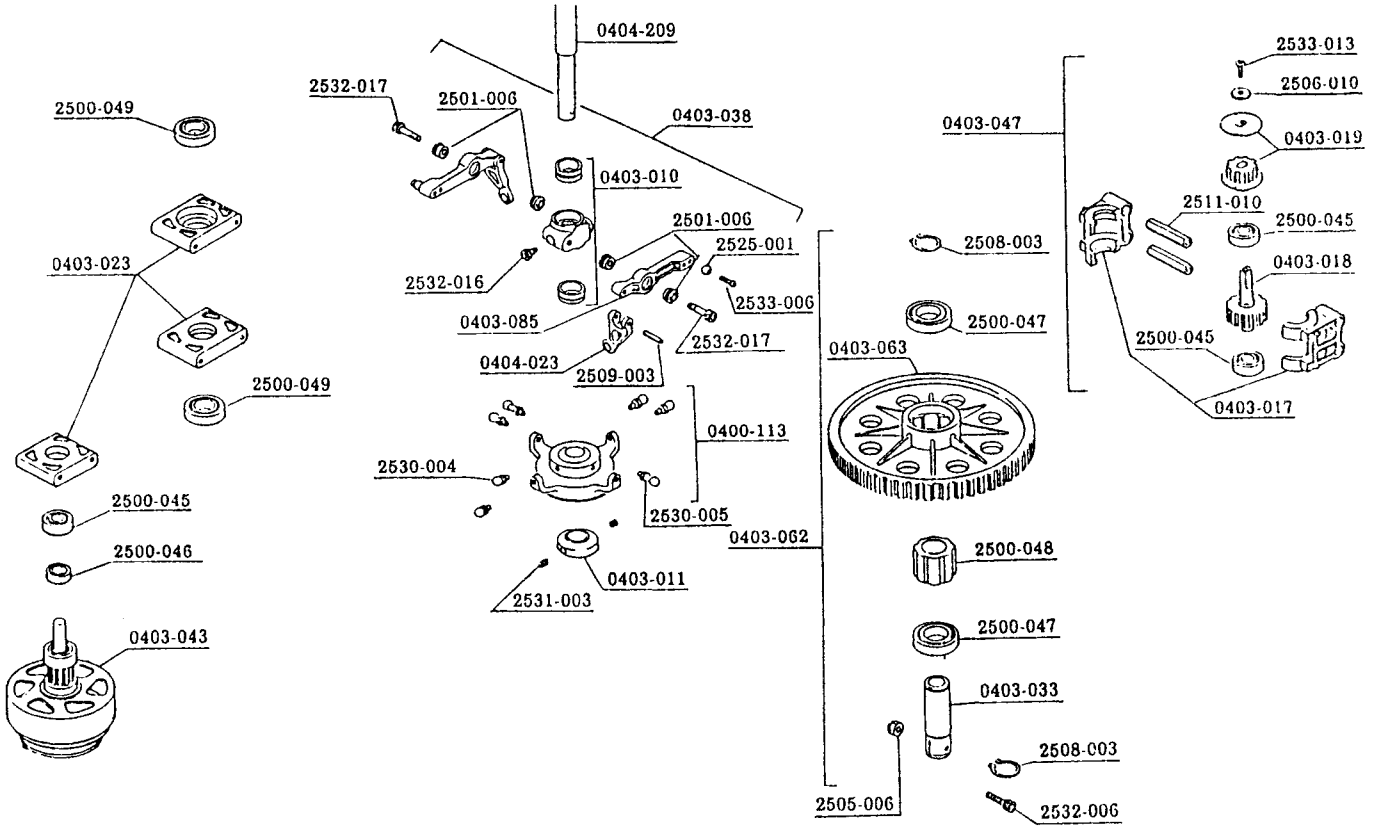


Code No.	Name of parts	Quantity	Japanese retail price (¥)	Remarks	SST-E	SST-C	BBL-H	BBZ-S	BBC-S
0401-004	Stabilizer control arm	2	1,200		○	○		○	
0404-208	Stabilizer blade (CG type)	2	1,600		○	○	○	○	○
0403-075	Main blade	2	3,000					○	○
0404-216	Pitch arm	2	600		○	○	△	○	△
0403-081	Stabilizer bar	2	1,000		○	○	○	○	○
0404-001	Mixing arm	1	1,500	With bearing	○	○		○	
0404-202	Blade holder	2	1,200			○	○	○	○
0404-209	Main mast (L=178)	1	1,000					○	
0404-210	Yoke (FFZ)	1	1,000			○		○	
0404-211	Damper rubber (FFZ)	2	300			○		○	
0404-212	Feathering spindle (FFZ)	1	1,000			○		○	
0404-213	Seesaw (FFZ)	1	2,200			○		○	
0404-214	Center hub (FFZ)	1	4,000			○		○	
0404-215	FFZ rotor head assembly	1	19,800	Rotor head complete	△	○	△	○	△

# BBZ-STORK - 2

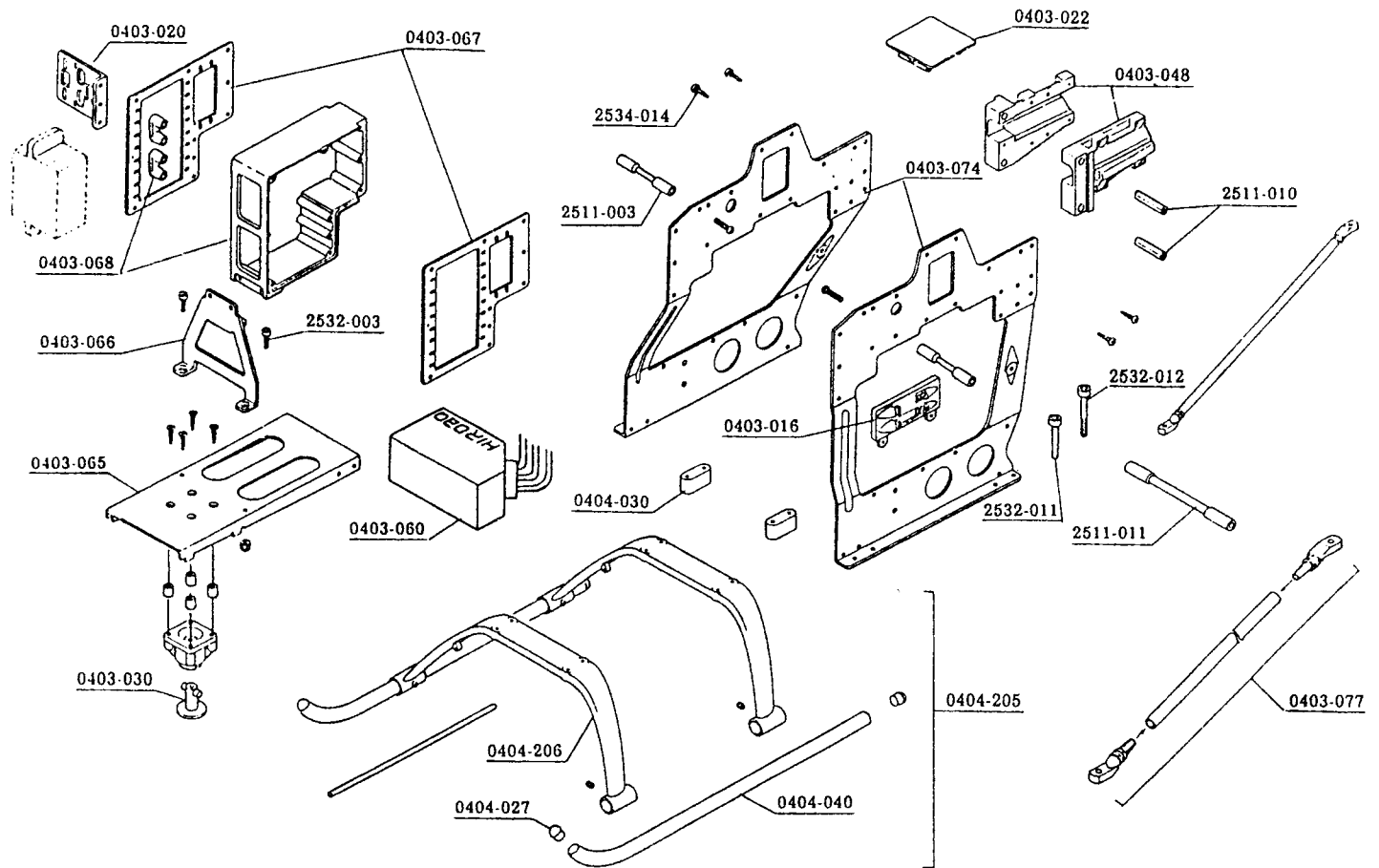
# HIROBO LIMITED

Wash-out



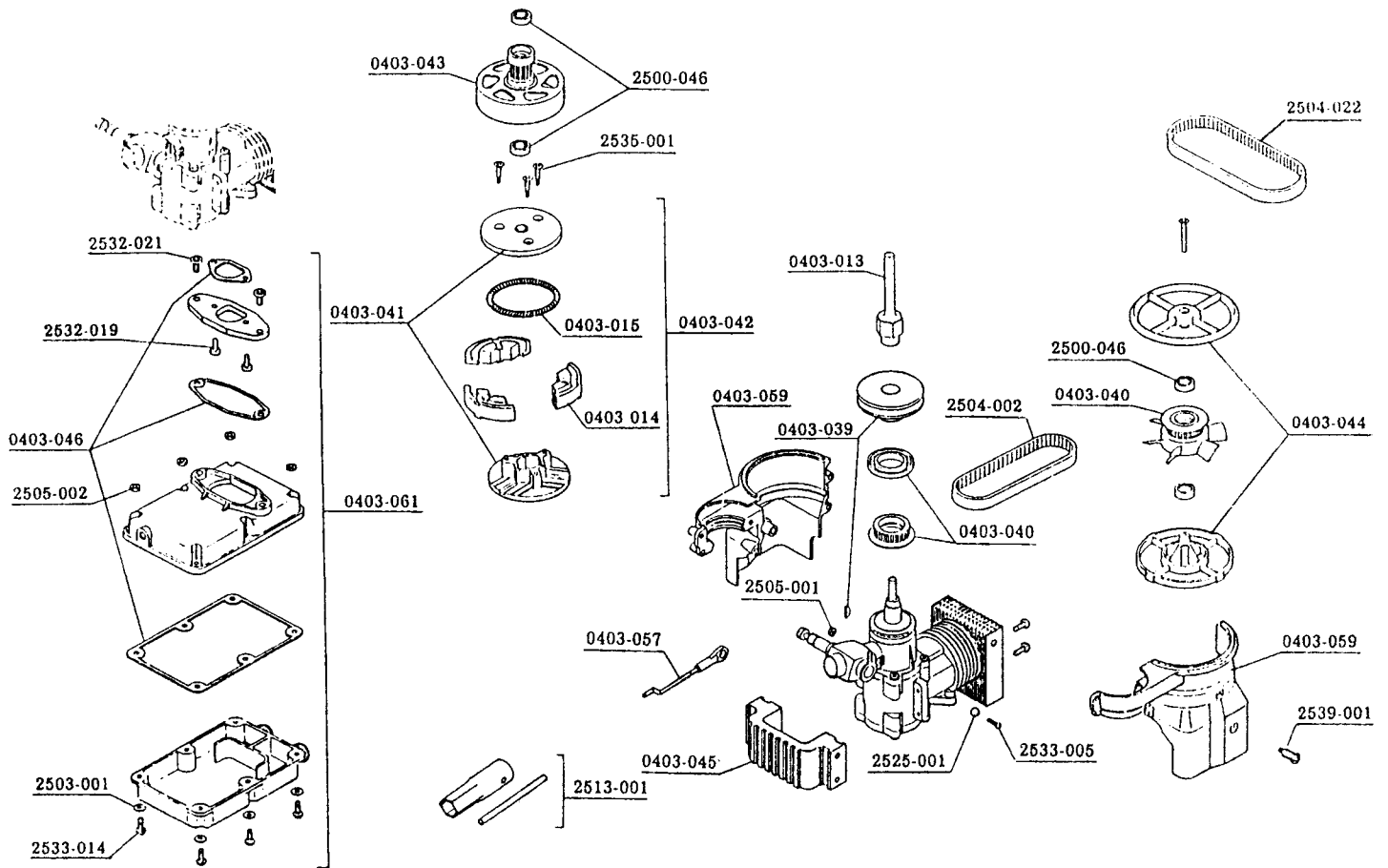
Code No.	Name of parts	Quantity	Japanese retail price (¥)	Remarks	SST-E	SST-C	BBL-H	BBZ-S	BBC-S
0400-113	Coaxial swath assembly	1 set	7,500		○	○	○	○	○
0403-010	Slide block set	1	1,000	With bushing	○	○	○	○	○
0403-011	Mast block	1	300		○	○	○	○	○
0403-017	Counter gear case	2	800			○	○	○	○
0403-018	Counter gear 18T	1	1,300			○	○	○	○
0403-019	Timing pulley 9T	1	300			○	○	○	○
0403-023	Bearing holder set	1 set	800			○	○	○	○
0403-033	Auto rotation drive shaft	1	1,800	With stop ring		○	○	○	○
0403-038	W-type wash-out	1 set	3,000	Pre-assembled	○	○	○	○	○
0403-043	Clutch bell	1	3,500	With bearing					
0403-047	Counter gear set	1 set	3,800			○	○	○	○
0403-062	Main gear 97T with auto rotation	1 set	5,000	Pre-assembled		○	○	○	○
0403-063	Main gear 97T	1	1,200			○	○	○	○
0403-085	W-type wash-out control arm	2	350		○	○	○	○	○
2511-010	Hexagon cross member L=26	2	400		○	○	○	○	○
0404-023	Radius arm	2	300		○	○	○	○	○
0404-209	Main mast	1	1,000			○	○	○	

Main frame



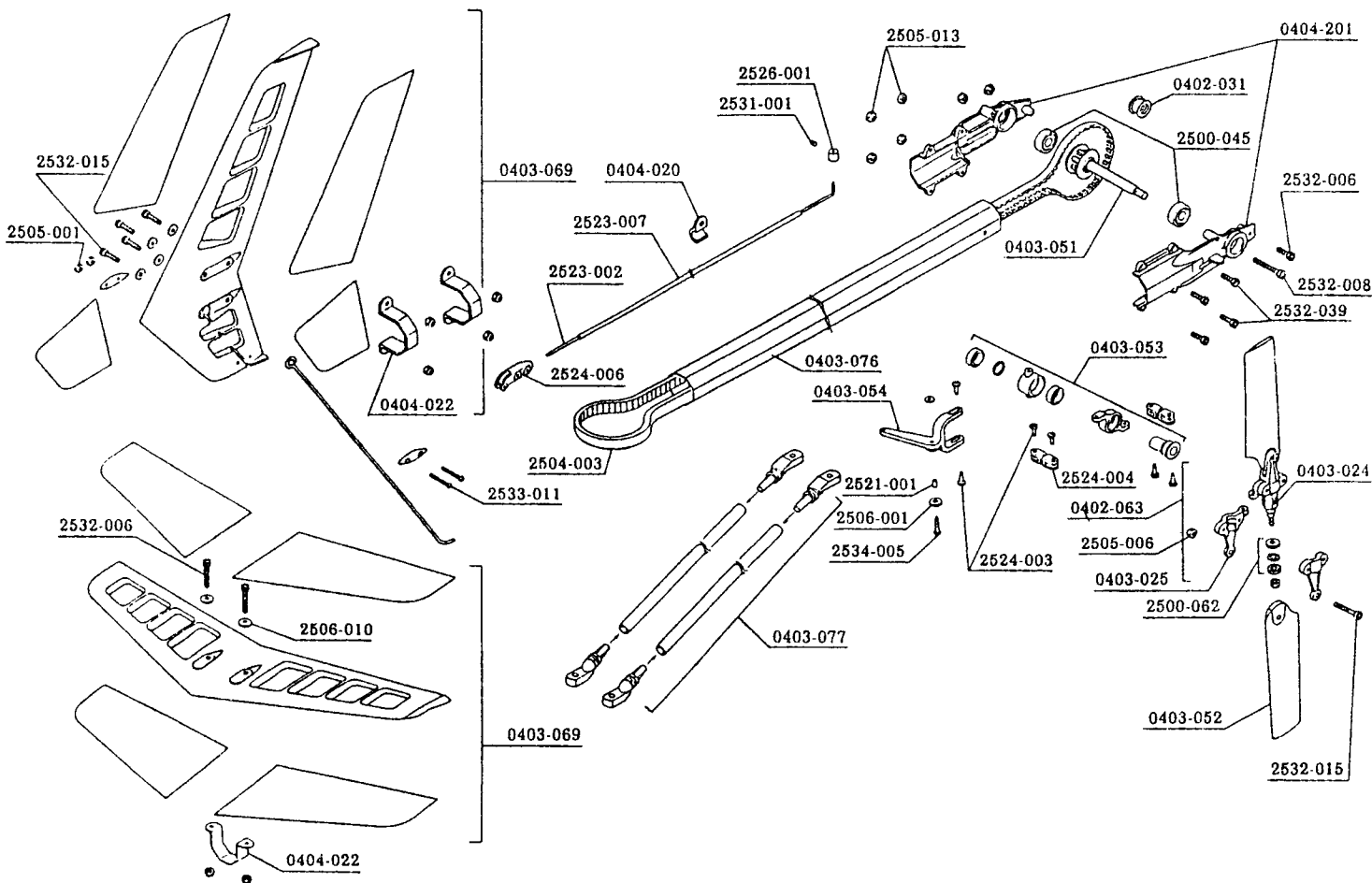
Code No.	Name of parts	Quantity	Japanese retail price (¥)	Remarks	SST-E	SST-C	BBL-H	BBZ-S	BBC-S
0403-016	Fuel filter catch	1	200		△	△	△	○	○
0403-020	Switch plate	1	500		△	△	△	○	○
2511-011	Cross member L=70	1	300					○	○
0403-022	Gyro mount	1	300				○	○	○
0403-032	Nose gear base	1	250	With screw				○	○
0403-030	Cam lock set	1 set	400	Cam lock set×2 Nose gear lock×1 skid stand×2				○	○
0403-048	Tail boom holder	1 for each	1,200	(R) (L) each 1	○	○	○	○	○
0403-060	Fuel tank set	1 set	800	Tank, inlet piece and pipe				○	○
0403-065	Front frame	1	1,200					○	○
0403-066	Servo mount support	1	600					○	○
0403-067	Servo frame	2	1,600					○	○
0403-068	Servo mount set	1 set	1,200	(A)×1, (B)×1				○	○
0403-074	Main frame set	1 for each	5,000	(R) (L) each 1				○	○
0403-077	Tail boom blade set	1 set	1,000		○	○	○	○	○
2511-010	Hexagon cross member L=26	2	400		○	○	○	○	○
2511-003	Cross member M3×26	2	400		○	○	○	○	○
0404-027	Skid pipe cap	4	300		○	○	○	○	○
0404-040	Skid pipe	2	1,000		○	○	○	○	○
0404-205	Landing gear assembly	1 set	2,500		○	○	○	○	△
0404-206	Skid foot	2	1,000		○	○	○	○	△

Engine unit



Code No.	Name of parts	Quantity	Japanese retail price (¥)	Remarks	SST-E	SST-C	BBL-H	BBZ-S	BBC-S
2504-022	Starting belt L = 400	1	600		○	○	○	○	○
0403-013	Clutch shaft	1	1,500					○	○
0403-014	Clutch shoe	3	600					○	○
0403-015	Clutch spring	1	300					○	○
0403-039	Starter pulley	1	2,300	With semi-circular key				○	○
0403-040	Cooling fan set	1	800					○	○
0403-041	Clutch housing set	1	800					○	○
0403-042	Clutch set	1	1,500					○	○
0403-043	Clutch bell	1	3,500	With bearing				○	○
0403-044	Cooling fan bearing	1 for each	500	(A) (B)				○	○
0403-045	Engine mount	1	1,500					○	○
0403-046	Gasket set for mufflet	Discontinued		0403-061				○	○
0403-057	Adjust rod joint set	Discontinued		(A) (B) (C) other 1				○	○
0403-059	Cooling fan cover	2	1,500					○	○

Tail unit

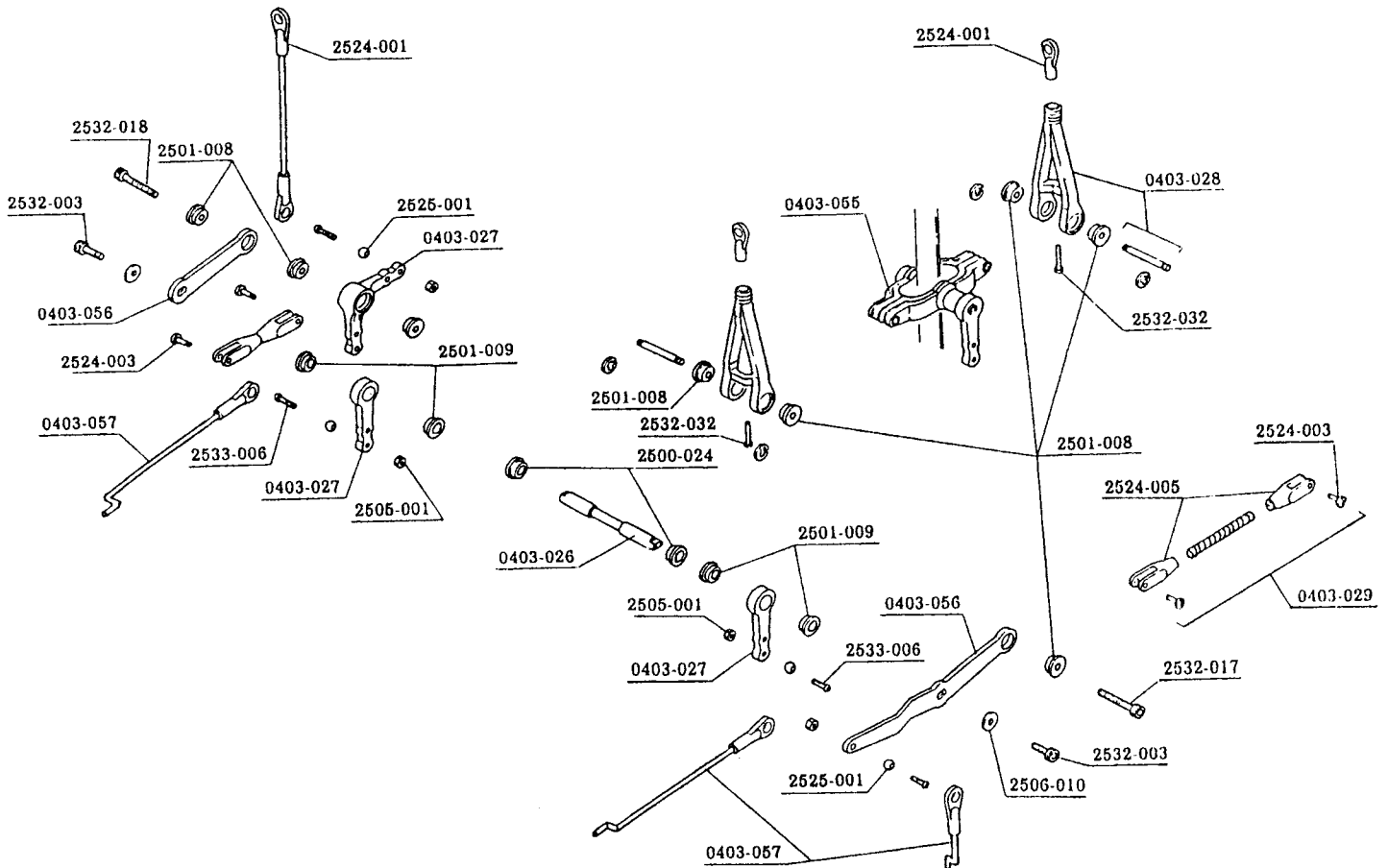


Code No.	Name of parts	Quantity	Japanese retail price (¥)	Remarks	SST-E	SST-C	BBL-H	BBZ-S	BBC-S
2523-007	Rudder control pipe	10	2,000		○	○	○	○	○
0402-031	Guide pulley	1	800	With bearing		○		○	
0402-063	Tail housing assembly	1 set	2,500			○	○	○	○
0403-024	Tail housing	1	600			○	○	○	○
0403-025	Tail blade holder	2 for each	300	(A) (B) each 2		○	○	○	○
0403-051	Tail shaft	1	700	With 9T pulley		○	○	○	○
0403-052	Tail blade	2	500					○	○
0403-053	Tail pitch plate assembly	1 set	2,500	Pre-assembled		○	○	○	○
0403-054	Tail pitch lever	1	400			○	○	○	○
0403-069	Stabilizer set	1 set	1,500	Horizontal, Vertical and Cover film	○	○	○	○	○
0404-020	Pipe clamp bracket	2	250		○	○	○	○	○
0403-022	Pipe band	3	500		○	○	○	○	○
0404-201	Tail unit case	1 for each	800	(R) (L)		○	△	○	△

# BBZ-STORK - 6

# HIROBO LIMITED

Pitch up

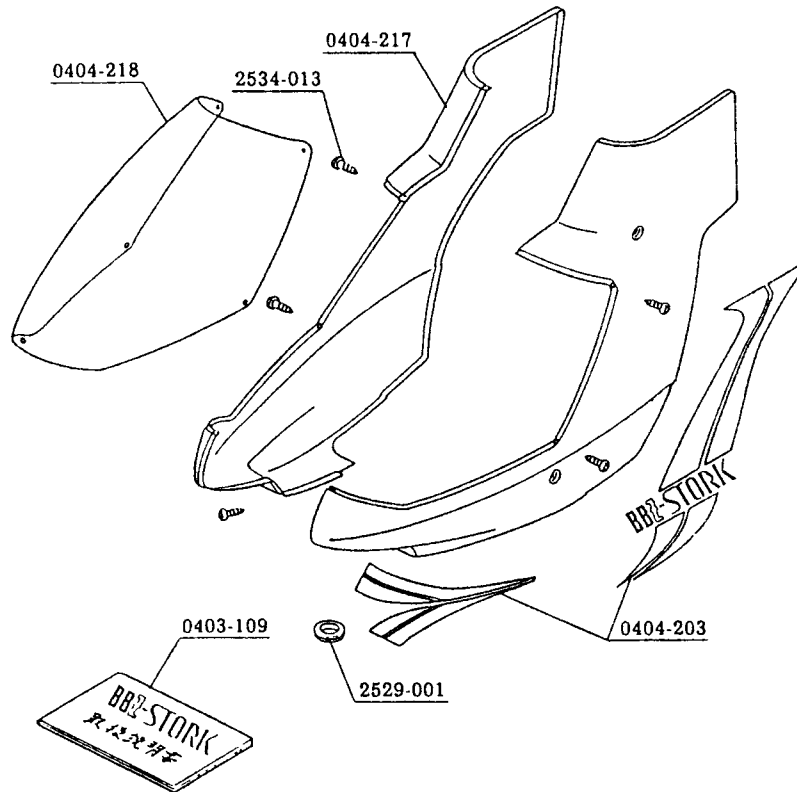


Code No.	Name of parts	Quantity	Japanese retail price (¥)	Remarks	SST-E	SST-C	BBL-H	BBZ-S	BBC-S
0403-026	Pitch lever shaft	1	350			○	○	○	○
0403-027	L and I-type lever set	1 set	600	L-type×1, I-type×2		○	○	○	○
0403-028	Elevator rod set	1 set	600	With pin and E-ring		○	○	○	○
0403-029	Linkage set	Discontinued		Use to 2524-003×2 Use to 2522-001×1				○	○
0403-055	Elevator lever	1	500			○	○	○	○
0403-056	Collective pitch lever	1 for each	800	(R) (L) each 1	○	○	○	○	○
0403-057	Adjust rod set	Discontinued						○	○

# BBZ-STORK-7

HIROBO LIMITED

Cabin · others



Code No.	Name of parts	Quantity	Japanese retail price (¥)	Remarks	SST-E	SST-C	BBL-H	BBZ-S	BBC-S
0403-109	BBZ-STORK instruction manual	1	1,500					○	
0404-203	SST-CONDOR decal	1	800			○		○	
0404-217	Cabin	1	6,000		△	○	△	○	△
0404-218	Canopy	1	1,600	Cut		○		○	
0404-215	FFZ rotor head	1 set	19,800		△	○	△	○	△
2529-001	Grommet 14×22×5T	4	200					○	○